



# PROTEC<sup>2</sup> CLIQ™

Double secured access control for your business



The background of the entire page is a photograph of two large, steel lattice power line towers. They are positioned on either side of the frame, with numerous high-voltage power lines stretching from them across the sky. The sky is a clear, bright blue with some light, wispy white clouds. The perspective is looking up at the towers, making them appear to converge towards the top of the image.

# Whatever your environment is.

UTILITIES ARE CRITICAL TO OUR WELL-BEING. SAFE, DEPENDABLE AND REMOTELY CONTROLLED PROTEC<sup>2</sup> CLIQ ENSURES THAT UNAUTHORIZED PERSONS ARE KEPT OUT WHILE ALLOWING TRACEABILITY AND FLEXIBILITY IN ACCESS RIGHTS ADMINISTRATION.




# Important matters need to be secured.



RAILROADS BENEFIT FROM A SYSTEM THAT MAKES IT EASY TO UPDATE AND MANAGE ACCESS RIGHTS. REMOTELY CONTROLLED PROTEC<sup>2</sup> CLIQ PADLOCKS ARE THE ULTIMATE SOLUTION FOR WORLDWIDE LOGISTICS IN EXTREME CONDITIONS ON RAIL, ROAD AND SEA.





# Do you expect more from your locking and access control system than simply opening and closing doors?



AIRPORTS NEED TO CONTROL THE ACCESS OF THOUSANDS OF PASSENGERS AND PERSONNEL AROUND THE CLOCK. THE ABILITY TO INTEGRATE REMOTELY UPDATABLE, TIME-BASED ACCESS RIGHTS TO A SINGLE KEY MAKES PROTEC<sup>2</sup> CLIQ STAND OUT AS THE ACCESS CONTROL SOLUTION FOR AIRPORTS.





# the right people are allowed people are kept out?

In today's dynamic business environment, high security procedures are vital while greater flexibility and scalability are required. Therefore, the system should be simple and easy to use. In most cases it is not practical to have a separate electronic system for access control and a mechanical one for physical security – especially when you need to control life cycle costs of your systems.

ABLOY PROTEC<sup>2</sup>, which is based on the patented rotating disc cylinder mechanism, takes care of the mechanical security at your site, while electronic CLIQ technology allows flexible control of keys, access rights and audit trails. PROTEC<sup>2</sup> CLIQ combines both technologies into one effective solution.

**DOUBLE SECURING MEANS THAT THE  
SAFETY AND ACCESS CONTROL OF YOUR  
BUSINESS ARE BACKED UP WITH TWO  
SEAMLESSLY INTEGRATED TECHNOLOGIES.**



Do you want to ensure that  
in and the wrong p







## THIS IS PROTEC<sup>2</sup> CLIQ

### DOUBLE SECURED AND SAFE

Thanks to the seamless integration of mechanical and electronic technology, PROTEC<sup>2</sup> CLIQ is double secured.

### COST-EFFICIENT AND WIRE FREE

PROTEC<sup>2</sup> CLIQ stands for lower lifecycle costs. The pre-programmed and wireless locking components bring down installation costs. Adding new locations and locks to the system or updating an existing system is convenient and cost-effective.

### REMOTELY CONTROLLED AND ADAPTABLE

Browser-based CLIQ Web Manager allows change to access rights whenever and wherever required – a major benefit particularly in a geographically spread out system.

### EASY TO USE AND FLEXIBLE

Using the electromechanical cylinder feels as fast as using a mechanical one. LED indicators inform whether key has access or not, which is useful especially in noisy environments. Because only one symmetrically shaped key is needed to grant access where needed, the system is easy to use from a single user's point of view. On the other hand, system administrators appreciate its flexibility. If a key is lost, removing it from the system and creating a new one is easy.

### TIME-BASED AND AUTOMATIC

Updatable access rights are based on time and calendar – this enables meeting the access needs of various user groups. For example service provider can be automatically granted access only at predestined times. CLIQ Web Manager records an audit trail each time a key is used. The trail posts both time and nature of each event for all locations. Updating access can be automatized and does not require any procedures from the system administrator.

### ENCRYPTED AND CONVENIENT

All transfer of data and access rights is encrypted. The system can be securely hosted by Abloy.

### SCALABLE AND INTEGRATABLE

By adding mechanical PROTEC<sup>2</sup> locks into the system, PROTEC<sup>2</sup> CLIQ may be tailored to provide an exact fit to your company or organization. Additionally, PROTEC<sup>2</sup> CLIQ can be integrated with your other solutions through the Web Service interface.

# AN INTELLIGENT COMBINATION OF ELECTRONICS AND MECHANICS

The unique ABLOY cylinder mechanism, based on the use of rotating discs instead of the traditional springs and pins, is widely known by security professionals as the world's premium high security locking system. ABLOY PROTEC<sup>2</sup> is the latest development of this technology.

PROTEC<sup>2</sup> improves your security level with a new disc controller and key design. This patented disc controller structure requires a moving element in the key to mate with the cylinder internally in order to function, thus raising the difficulty of any attempt of unauthorized key copy.

By combining PROTEC<sup>2</sup> with intelligent and highly customizable CLIQ technology, you bring your locking security to a whole new level.

## MECHANICAL ABLOY® PROTEC<sup>2</sup> KEY AND CYLINDER

- Durable design without springs and pins
- Disc Blocking System – patented feature that stops attempts to manipulate the discs
- Bump proof and virtually pick proof
- The key and cylinder features are patented until 2031
- 1.97 billion different key combinations
- The symmetrical key can be inserted both ways
- Only one key needed for each user. One key can operate the complete range of ABLOY high security locks, doors, padlocks, cam locks, etc.
- Reliable function in severe environments
- With the latest CLIQ technology using the electromechanical cylinder feels as fast as using a mechanical one



## COMPREHENSIVE RANGE OF PRODUCTS INCLUDES PADLOCKS, DOOR CYLINDERS, CAM LOCKS, CABINET LOCKS AND KEY DEPOSITS.

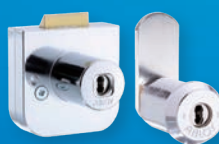
- Tested and patented
- ATEX 2 classified
- IP68 rated range of padlocks



Robust and IP68 classified padlocks with CLIQ functionality for the harshest conditions.



Suitable lock cylinders for every door. Available also with dust cover protection.



Cabinet locks and cam locks with or without CLIQ.



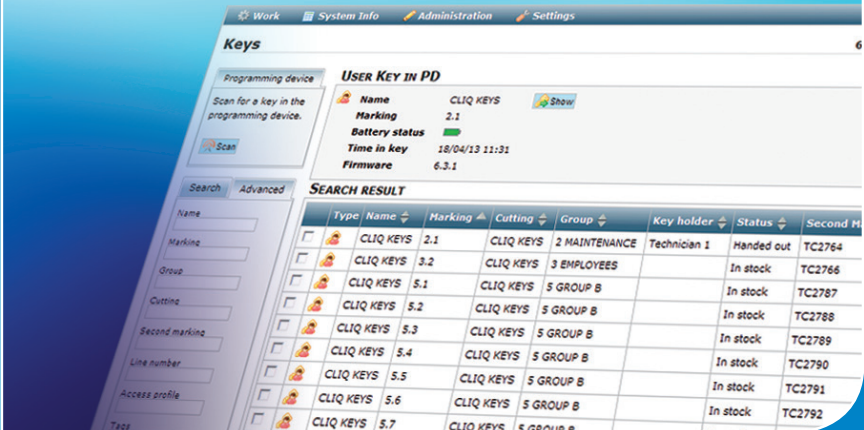
Key deposits for storing route keys safely.



ABLOY SUPER WEATHER PROOF is the world's best padlock. Sealed shackles and cap provide superb protection against ingress of exterior particles.

### CLIQ WEB MANAGER FOR EASY MANAGEMENT

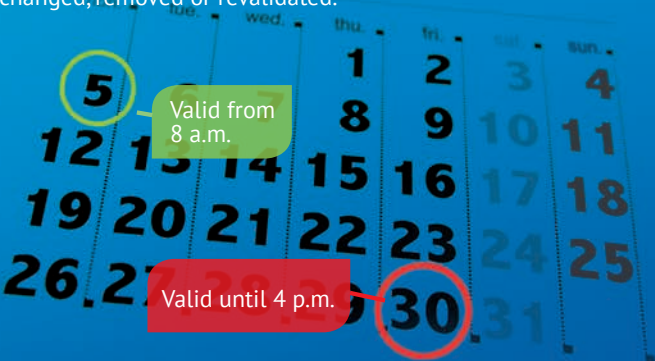
- Browser-based tool for remote control of access rights of locks and keys
- Updating the access rights is not bound to time or place – the administrator and the user do not have to be in the same physical location



### ELECTRONIC CLIQ TECHNOLOGY

- CLIQ technology which is especially designed for locking industry, provides unique identification for every opening through encrypted communication
- Battery inside the key provides wireless function of time and calendar with complete audit trail
- Battery can last for up to 10 years
- Calendar and time-based access rights are easy to change remotely
- Mechanical system is easily and cost-efficiently expandable with CLIQ properties
- When the key is inserted into the lock, the buzzer and LED indicators inform whether the key has access or not

Access rights in the key can be set to a certain time and date and can be easily changed, removed or revalidated.





# Award winning

Double secured access  
control technology

**PROTEC<sup>2</sup> CLIQ™**  
system by Abloy Oy



ABLOY secures people, property, and business operations on land, at sea, and in the air – in all circumstances.

ASSA ABLOY is the global leader in door opening solutions, dedicated to satisfying end-user needs for security, safety and convenience.

**MANUFACTURER:**

**Abloy Oy**

Wahlforssinkatu 20  
P.O. Box 108  
FI-80101 Joensuu | Finland  
Tel. +358 20 599 2501  
[WWW.ABLOY.COM](http://WWW.ABLOY.COM)



An ASSA ABLOY Group brand **ASSA ABLOY**