

# CONTROLLING CONVENIENCE

*Door closers & fire door closing systems*





In a well-functioning facility, the doors adapt to user needs, not vice versa.

*Frequent passage imposes clear demands if smooth traffic is to be ensured, and access control and fire safety set still more demands. **ABLOY®** door closers and fire door closing systems take all of these into consideration. Our extensive selection of models mounted either on the surface or in a concealed manner, along with versatile adjustment options, offers a reliable alternative for the widest range of uses and door environments.*

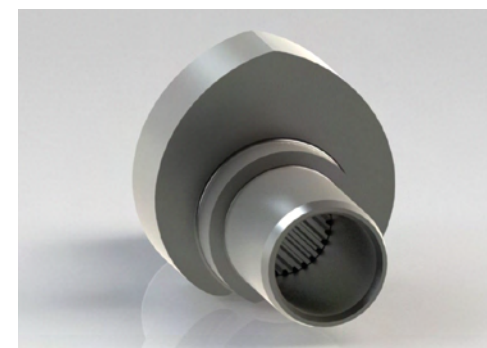
#### Comprehensive portfolio

CAM Motion and Rack&Pinion technology with versatile product features. Applications for surface and concealed installation, single and double leaf doors.



#### One installation for all

CAM Motion technology reduces the door-opening force required, and the handling of the door is measurably easier than with conventional slide-arm door closers. With a symmetric cam, the same version fits all installation alternatives. With grooved spindle the arm installation and adjustment is significantly easier.



VERSATILITY



Good design  
is not only stylish  
but also easy  
and safe.

DESIGN

*We offer modern enclosed housing design with unique details or concealed installation that blends in with the decor – always on the architecture's terms. The appearance is complemented with handles, door fittings, and other high-quality **ABLOY®** products that represent the same pure Nordic look.*



#### **Aesthetic advantages**

When a door closer is installed inside a door leaf or frame, only the pulling arm is visible when the door is open. In addition to being inconspicuous, the concealed installation considerably decreases the possibility of vandalism.



#### **A wide range of colours**

The versatile colour range brings variation to the unified housing design of door closers. Plastic housings are available in black, brown, brass, aluminium, and white. The metal housings are available in stainless steel and bright brass.

#### **Easy adjustment**

With the grooved spindle, the arm's installation and adjustment are significantly easier.



**ABLOY®** products  
help to create solutions  
that improve energy  
efficiency in buildings.

*Doors that close automatically after a person has entered keep the heat inside in Nordic winter conditions and decrease the need for air conditioning in more tropical areas. In addition to saving energy, the **ABLOY®** door closers adhere to the principles of sustainable development in both their service life and their recyclability.*



#### **Commitment to sustainability**

In all product development and manufacture, Abloy fulfils the strictest quality criteria with the least possible environmental effect, by decreasing its consumption of chemicals, energy, and materials.

**SFS-EN ISO 9001**  
quality  
management system

**SFS-EN ISO 14001**  
environmental  
management system

**OHSAS 18001**  
occupational health and  
safety management system

SUSTAINABILITY



CE-approved  
**ABLOY®** door closers  
and fire door closing  
systems meet  
requirements for  
fire and smoke  
protection doors.

*In addition to security, durability, and practicality, the product development focuses on accessibility by taking the needs of various user groups into consideration.*

**CE approval is based to the EN standards for building hardware. EN standards define requirements regarding:**

- Forces
- Efficiency
- Functionality
- Product information and marking
- Test methods and procedures



**EN 1154**

controlled door  
closer devices

**EN 1155**

electrically powered  
hold open devices

**EN 1158**

door coordinator  
devices



**DDA - Disability  
Discrimination Act**  
(BS8300)

- Civil rights legislation concerning discrimination
- Ease in door opening – CAM products enables rapidly decreasing torque curve that comply with BS8300 and CEN TR 15894.



- ABLOY DC250, DC240 are UL and cUL listed door closers for use on fire doors
- Products conform to standards UL 10C and UBC 7-2 for positive pressure fire test

STANDARDS





## CONVENIENCE

*A door must open effortlessly and close in a controlled manner in order to facilitate access by all user groups. The door closer and pulling arm must blend in with the door environment.*

## PUBLIC BUILDINGS

*Public buildings have many types of doors for which the door closer must operate reliably and unnoticeably in all circumstances of use. The extensive **ABLOY®** range provides a solution for all usage requirements.*

## HEAVY SECURITY

*Even a heavy door must close reliably after each opening, in order to prevent any security risks.*

PRODUCT	EN-CLASS	CONVENIENCE	PUBLIC BUILDINGS	HEAVY SECURITY	TRAFFICFLOW
RACK PINION					
DC334	EN 1-4	●	●	—	MEDIUM
DC335	EN 3-5	●	●	—	
DC240	EN 2-6 / EN 1-4	●	★	★	HEAVY
DC247	EN 5-7	—	●	★	
CAM MOTION					
DC330	EN 1-4	★	●	—	MEDIUM
DC840 CONCEALED	EN 1-4	★	★	—	
DC250	EN 1-6	★	★	★	HEAVY
DC860 CONCEALED	EN 1-5	★	★	●	
FIRE DOOR SOLUTIONS					
FD440 FREESWING FOR SINGLE DOORS applications; homes for the elderly, hospitals, apartments for disabled people etc.		★	—	—	MEDIUM
FD460-464 SINGLE AND DOUBLE DOORS applications; hospitals, schools, public buildings etc.		★	★	—	HEAVY

Detailed product information from our technical brochures and websites [www.abloy.com](http://www.abloy.com)

— NOT SUITABLE FOR PURPOSE ● SUITABLE FOR PURPOSE ★ RECOMMENDED



[www.abloy.com](http://www.abloy.com)

Abloy Oy  
Wahlforssinkatu 20  
P.O. Box 108  
FI-80101 JOENSUU  
FINLAND  
Tel. +358 20 599 2501  
Fax +358 20 599 2209



An ASSA ABLOY Group brand

**ASSA ABLOY**

Abloy Oy is one of the leading manufacturers of locks, locking systems and architectural hardware and the world's leading developer of products in the field of electromechanical locking technology. ASSA ABLOY is the global leader in door opening solutions, dedicated to satisfying end-user needs for security, safety and convenience.