



SECURED BY  
**ABLOY**

FOR TRUST IN TRANSPORTATION

# Critical Infrastructure Protection for the Transportation Industry

**ABLOY**



## For Trust in Transportation

ABLOY provides digital, electromechanical and mechanical solutions for security and access control for the entire transportation ecosystem – including road, maritime, railway and aviation transport providers.



## Running the wheels of the global economy

**Due to the continuously accelerating e-commerce and the international trade systems, a growing number of utilities, public institutions, industrial enterprises and companies depend on the ability to deliver their services 24/7.**

The security landscape in the transportation and logistics sector is changing at the same pace as technological developments advance. Any break or interruption to this service can cause a severe challenge to security, a costly loss of revenue, a breach in health and safety, customer dissatisfaction and a ruined reputation.

One of the biggest risks in transportation and logistics relates to the security against internal and external theft in the supply chain. Especially in grocery or food transportation, containers need to remain unopened during transport to secure the goods against contamination.

Every part of the supply chain must ensure physical security and protocols to be part of the risk management system to guarantee that the cargo arrives safely and intact. That's why key control, traceability of key use and remotely controlled, accurate access rights have become vital.

## Remotely-controlled security and safety on the road

### ROAD INFRASTRUCTURE SOLUTIONS

Major bridges and tunnels are critical elements of road infrastructure, and therefore vulnerable to vandalism and terrorism. Secured and managed by the Digital Portfolio for Critical Infrastructure product range, an audit trail and access control of competent engineers is ensured. Additionally, the smart motorway roadside cabinets that control rush hour traffic require reliable locking solutions. With ABLOY's Super Weather Proof padlock, the components are extremely well protected to ensure operation in all conditions.



### CARGO SOLUTIONS

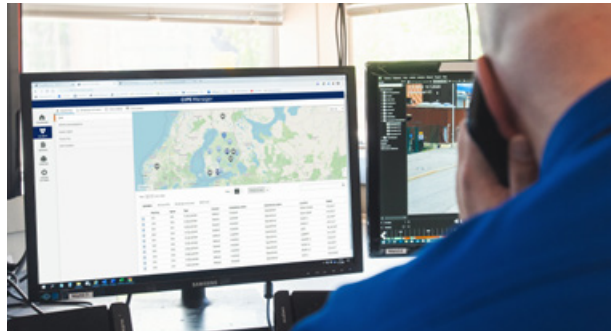
Remotely administered and automated validations of restricted access rights are only a few of the cost-saving factors there is to offer. With the high-end Bluetooth padlock ABLOY® BEAT, the owner of the delivery can authorise the driver to open the container's padlock with a mobile app.







**Control and awareness  
from ports to the sea**



**SEAPORT SOLUTIONS**

Seaports warrant special attention when it comes to security threats such as unauthorised access, cargo theft and smuggling. The CIPE Manager visual user interface connects all users, access rights, locks and keys for maximum security and situational awareness.

**CARGO SOLUTIONS**

To protect the cargo, the Super Weather Proof Bluetooth® ABLOY BEAT can be easily added to an existing workflow. Operated with a mobile app, ABLOY BEAT is useful in remote areas under busy schedules, and it works both online and offline.



**Ensuring the continuous flow of  
people, logistics and cargo**

**RESTRICTED ACCESS RIGHTS  
FOR ORGANISED AND SMOOTH  
AIRPORT OPERATIONS**

Airports are areas of high security where tens of thousands of people move around every day. There must be a clear distinction between public and demarcated areas. Access control must take into account the individual access rights of both staff and subcontractors.



**LOW ENERGY LOCKING SOLUTION  
FOR AIRPORT BUILDINGS**

When it comes to carbon offset, ABLOY Electric Locks provide a reliable, low-energy solution for every airport building door. Integrated into your existing access control system, they also enable smooth and aesthetic performance under all circumstances.





## INFRASTRUCTURE SOLUTIONS

From trackside and signaling equipment to the gates and access points of your maintenance yards, with the Digital Portfolio for Critical Infrastructure product range, you can manage all your keys, locks, and access rights on-the-go. Essential railway communication and power systems, often located in trackside boxes and cabinets, is protected by our ABLOY BEAT digital padlocks and ABLOY® Cam Locks. Electromechanical PROTEC2 CLIQ can be managed with the same CIPE Manager user interface together with the ABLOY BEAT keyless solution.

## ROLLING STOCK SOLUTIONS

Abloy provides advanced electronic locking systems for each carriage and locomotive. In addition to ABLOY's comprehensive product range, we provide holistic custom-made solutions, whether for a new configuration of existing components or a completely new structure for an existing system.

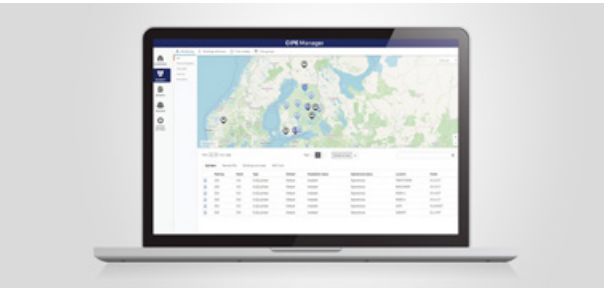


## STATION SOLUTIONS

Train stations have expanded into multi-purpose centres with shops, services and offices. The ABLOY Electric Locks range keeps restricted areas safe and secure and can form part of an emergency lockdown solution without compromising safety regulations.

## Comprehensive Product Range

Abloy is a proven supplier of security and safety solutions for all assets in the critical infrastructure environment and handles every aspect of security upgrade projects with care and expertise.



## CIPE MANAGER

CIPE Manager gives you total awareness of your security situation. You can manage your digital, electronic and mechanical solutions, as well as your user rights on the go with a very visually oriented and user-friendly interface. ABLOY BEAT, PROTEC2 CLIQ and other digital portfolio solutions are all managed with CIPE Manager.



## ABLOY® BEAT

ABLOY BEAT is a new digital locking solution that includes a Super Weather Proof Bluetooth padlock that is operated with a digital, mobile key and secured with the best-in-class Seos® credential technology. It's managed with CIPE Manager or can be integrated into third-party systems, so you are always in sync with your security situation within all critical infrastructure, industry and businesses.



## PROTEC2 CLIQ™

PROTEC2 CLIQ is Abloy's comprehensive and flexible key and access management system. It's a wireless solution with quick and easy installation, electronic keys and an audit trail. It provides instant and precise situational awareness of movements. It's easy to use and manage, making updating quick and efficient. It's also scalable for future needs and can be integrated with other systems.



## ABLOY® ELECTRIC LOCKS

Electric Locks go beyond the industry standard to set the benchmark. They're the smartest part of your access control system and are easily integrated. They provide real-time information about all your door usage and access rights. They're designed for a seamless, aesthetic and smooth performance under all circumstances. They set a new standard for trust behind every door.



## ABLOY® CUSTOM SOLUTIONS

For decades, Abloy Oy has been developing a range of customized applications for Original Equipment Manufacturers and Professional End Users. Whether it's a new configuration of existing components or a completely new structure for an existing system, our goal is always a cost-effective, holistic solution which offers a significant competitive advantage.





# SECURED BY **ABLOY**

ABLOY offers security and locking innovations dedicated to creating more trust in the world. Combining digital and mechanical expertise, Abloy Oy develops industry-leading security solutions that protect people, property and business. Abloy is part of the ASSA ABLOY Group, the global leader in access solutions. Every day, we help billions of people experience a more open world.

Abloy Oy  
Wahlforssinkatu 20  
P.O.Box 108  
FI-80101 Joensuu | Finland  
Tel. + 358 20 599 2501  
[Abloy.com](https://www.abloy.com)

This content is protected by Intellectual Property Rights Laws. The title to the content shall not pass to you, and instead shall remain with Abloy Oy or a third party holding the title. Abloy develops continuously the products and solutions offered. Therefore, the information contained in the document is subject to change without notice. ABLOY PROVIDES THIS CONTENT ON AN "AS IS" BASIS WITHOUT ANY WARRANTIES OF ANY KIND EXPRESS, IMPLIED, OR STATUTORY."



8808805 | 4/2021 | Subject to change without notice.