

ABLOY® Government Locking Solutions

Corporate Statement

Abloy Oy is one of the leading manufacturers of locks, locking systems and architectural hardware and the world's leading developer of products in the field of electromechanical locking technology.

ABLOY® is an ASSA ABLOY Group brand. ASSA ABLOY is the world leader in door opening solutions, dedicated to satisfying end-user needs for security, safety and convenience.

Corporate Profile

Abloy Security has been satisfying security needs for customers in Transportation, Public Utilities, U.S. Government, Casino Gaming, Vending, Parking Meters, OEM, Locker and Payphone markets.

Abloy Security provides a full range of locking product solutions designed to satisfy customers' most demanding applications.

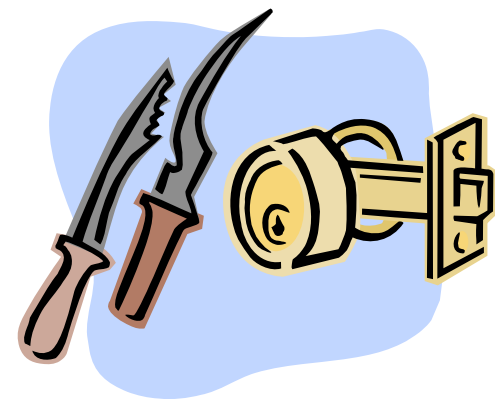


The ABLOY® Difference

- 
- ▶ Maximum Security
 - ▶ Accountability
 - ▶ Performance

Maximum Security

- ▶ Maximum resistance to physical attack
- ▶ Virtually pickproof locks by design
- ▶ Drill resistant: hardened, free spinning protection plate prevents drilling through
- ▶ Key-retaining feature prevents leaving site before re-locking
- ▶ Re-keyable in the event of key loss or theft



Accountability

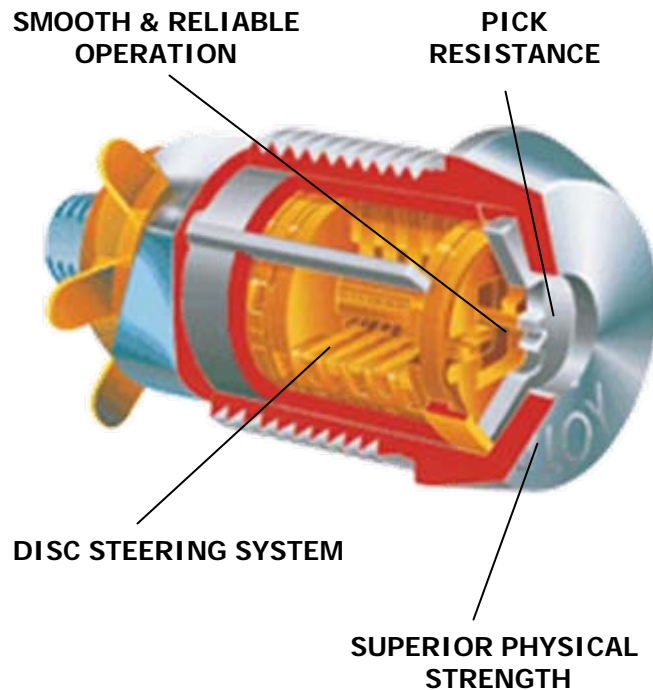
- ▶ Over 360 million key codes; each used only once
- ▶ No locksmith has access to **ABLOY**[®] EXEC key blanks or key cutting machines
- ▶ Extremely difficult to copy key cuts
- ▶ Key records allow for internal audits
- ▶ Minimized loss due to theft or maintenance
- ▶ Maximizes the amount of money you take to the bank

Key Control

- ▶ Exclusive **ABLOY**[®] Government keyway
- ▶ System can be designed to operate with just one key
- ▶ Patent restricted key controls unauthorized duplication

ABLOY®

Rotating Disc Principle



- ▶ No springs to wear, weaken, rust or freeze
- ▶ Millions of key combinations
- ▶ Virtually pickproof
- ▶ Exclusive key design
- ▶ Key retaining while unlocked
- ▶ Re-keyable when keys are lost or stolen

Performance

- ▶ Unique materials and surface treatments guarantee corrosion resistance of both visible parts and internal parts
- ▶ Principle operating components are highly resistant to wear, dirt, moisture, corrosion and freezing
- ▶ Spring free construction prevents the locks from jamming
- ▶ Ease of use, with effortless key entry and rotation, minimizes wear



Government Locking Solutions

- ▶ **ABLOY®** Government Padlocks
- ▶ **ABLOY®** PL Series Padlocks
- ▶ **SHUT-OUT®** Puck Lock & Hasps
- ▶ **ABLOY®** *FLEXLOCK* Series

Government Authorized

- ▶ Tested & authorized for use in Federal Government applications
- ▶ Models PL655 & PL656 are available under Federal Specification FF-P-2827.
Authorized under Federal Supply GSA Schedule GS-O7F-0368J under SIN 246-36 LOCKING DEVICES.
- ▶ All **ABLOY**® Padlock models are available in the US Government restricted keyway with proper identification and authorization

GSA



ABLOY® PL Series

- ▶ Strong resistance to physical attack – the hardened-boron steel shackle provides strong protection.
- ▶ Corrosion resistant – the chrome plated lock body provides superior performance as well as oversized drainage holes.
- ▶ Strong hold shackle – heel & toe locking stainless steel ball bearings dead-lock the shackle at both ends.
- ▶ Patented key control protection – ensures that keys will not be copied without authorization.



Lifetime Functional Warranty

If an **ABLOY**® PL-Series Padlock malfunctions due to:

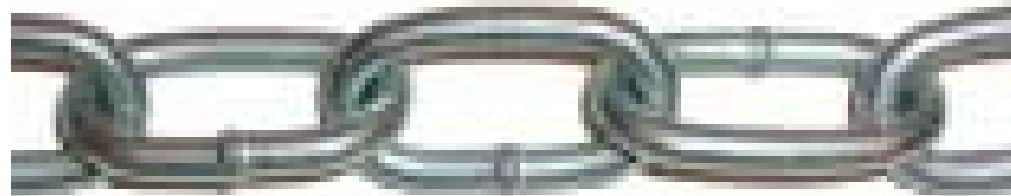
- ▶ Environmental Conditions
- ▶ Defects in Manufacturing
- ▶ Wear and Tear



We will repair or replace **ABLOY**® PL-Series Padlocks at NO-CHARGE!

Padlock Chain Options

- ▶ Attachment chain options are available with **ABLOY**[®] Padlocks, making it easier to ensure that a padlock does not get misplaced while the object that it secures is open.
- ▶ There are standard 12" and 18" chain attachments available.
- ▶ Government Padlocks are available with a 6" chain attachment as well as a 3' chain attachment that complies with the Federal Specification RR-C-271D.



SHUT-OUT[®] Puck Lock

- ▶ Houses an **ABLOY**[®] EXEC cylinder with over 4,000 pounds of pull strength
- ▶ Solid, machined steel lock housing protects the concealed shackle and lock cylinder
- ▶ Extra thick, case hardened steel face and anti-drill disc protects the lock cylinder's internal components
- ▶ Designed to be used with the ***SHUT-OUT***[®] Puck Hasp



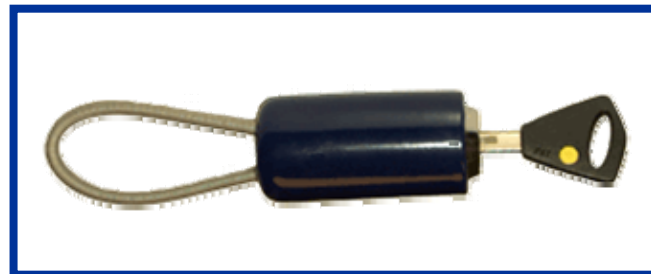
SHUT-OUT[®] Series Hasps

- ▶ Maximum security – designed to protect lock from prying and physical attack
- ▶ Corrosion resistant – body made of cold rolled steel.
- ▶ The hasp is designed to protect the lock, yet is easily unlocked by authorized employees



ABLOY® *FLEXLOCK* Series

- ▶ Ideal for route key control
- ▶ **ABLOY® EXEC** keyway
- ▶ Optimum Key Management – Once locked, keys cannot be removed from cable without authorized key to open lock
- ▶ Provides optimum protection when issuing keys to employees and contractors
- ▶ Available in 6", 8", 12" and 18" ring sizes



Maximize Your Security

- ✓ High Security Solutions
- ✓ Optimum ROI
- ✓ Exceptional System Flexibility
- ✓ Maximum Key Control
- ✓ Superior Service Levels

Contact us for more details



800-367-4598



972-753-0792



info@abloyusa.com



www.abloyusa.com