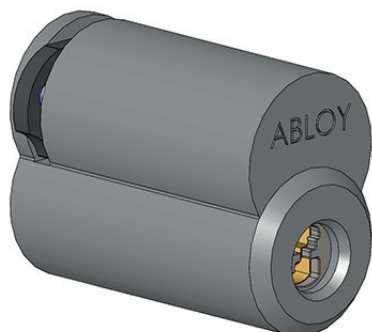


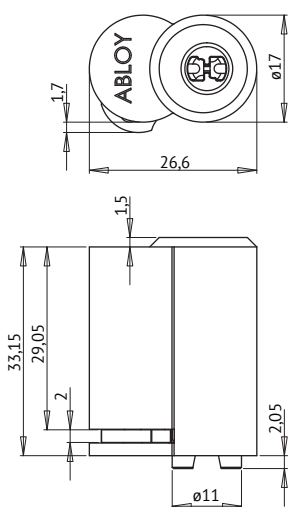
ABLOY® CY420

Interchangeable core cylinder with Yale large format dimensions



Overview of Advantages

- Suitable for both outer and inner door use
- Several plating options



Technical data

| | |
|---------------------------|---|
| Available key systems | ABLOY PROTEC, ABLOY PROTEC ² |
| Available plating options | Bright chrome (Cr), Brushed chrome (CrHa), |
| Cylinder length | 33,15mm |
| Suitable for fire doors | Yes |
| Weight | 0,09kg |

This content is protected by Intellectual Property Rights Laws. The title to the content shall not pass to you, and instead shall remain with Abloy Oy or a third party holding the title. Abloy develops continuously the products and solutions offered. Therefore, the information contained in the document is subject to change without notice. ABLOY PROVIDES THIS CONTENT ON AN "AS IS" BASIS WITHOUT ANY WARRANTIES OF ANY KIND, EXPRESS, IMPLIED, OR STATUTORY."